

# P.E.F. PUBLIC MONTHLY DASHBOARD - FEBRUARY, 2026



**10,975**  
FEBRUARY, 2026  
TRAVELERS



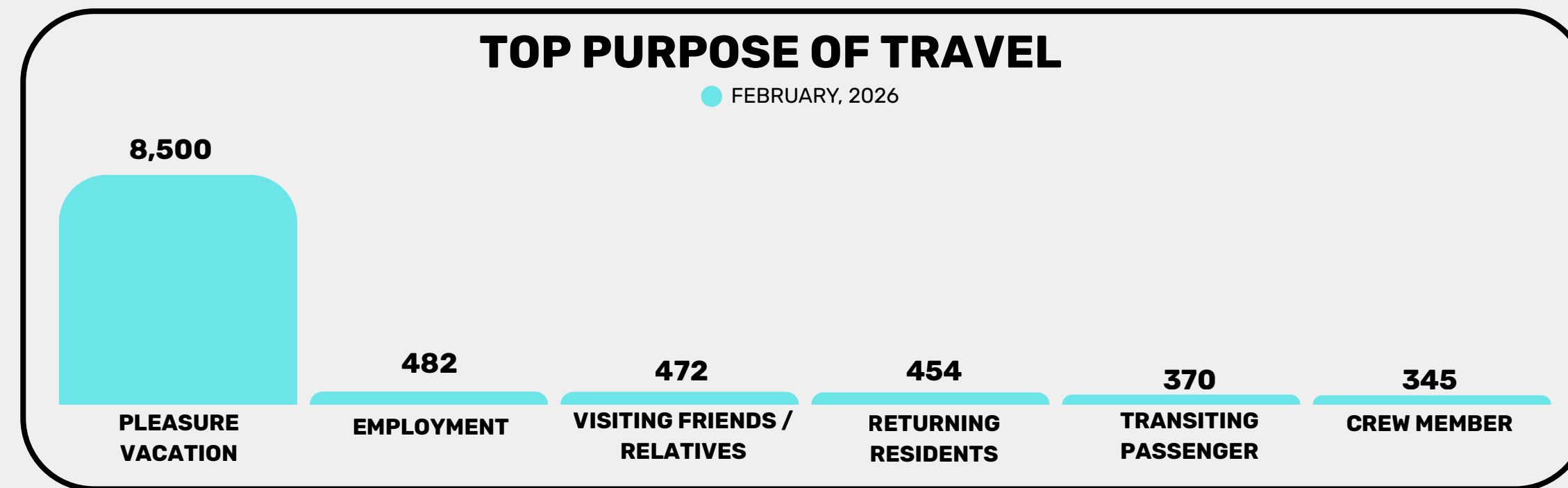
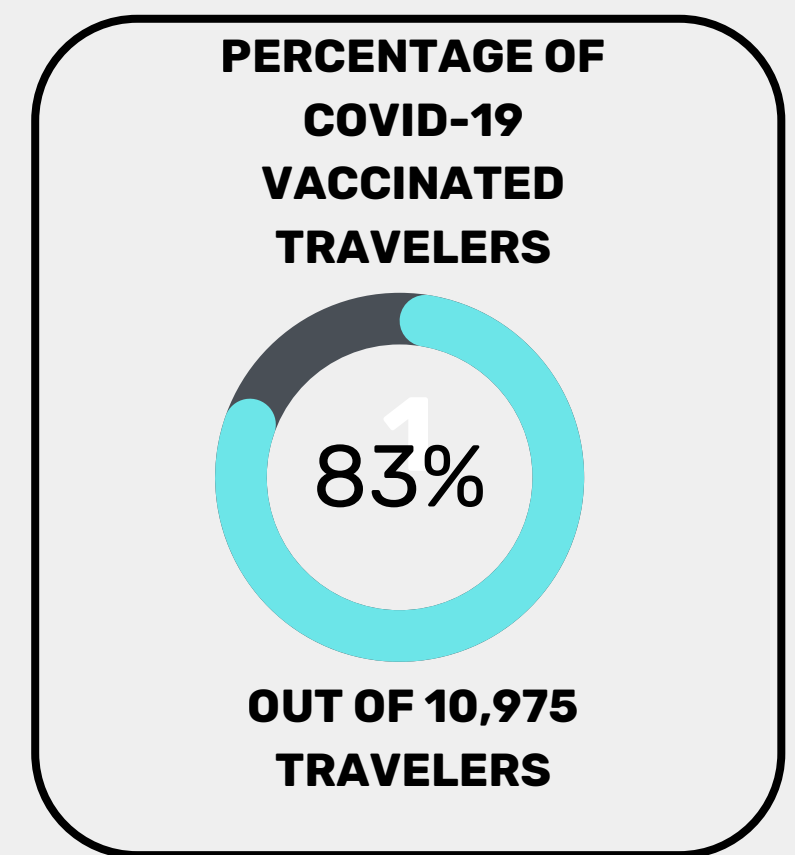
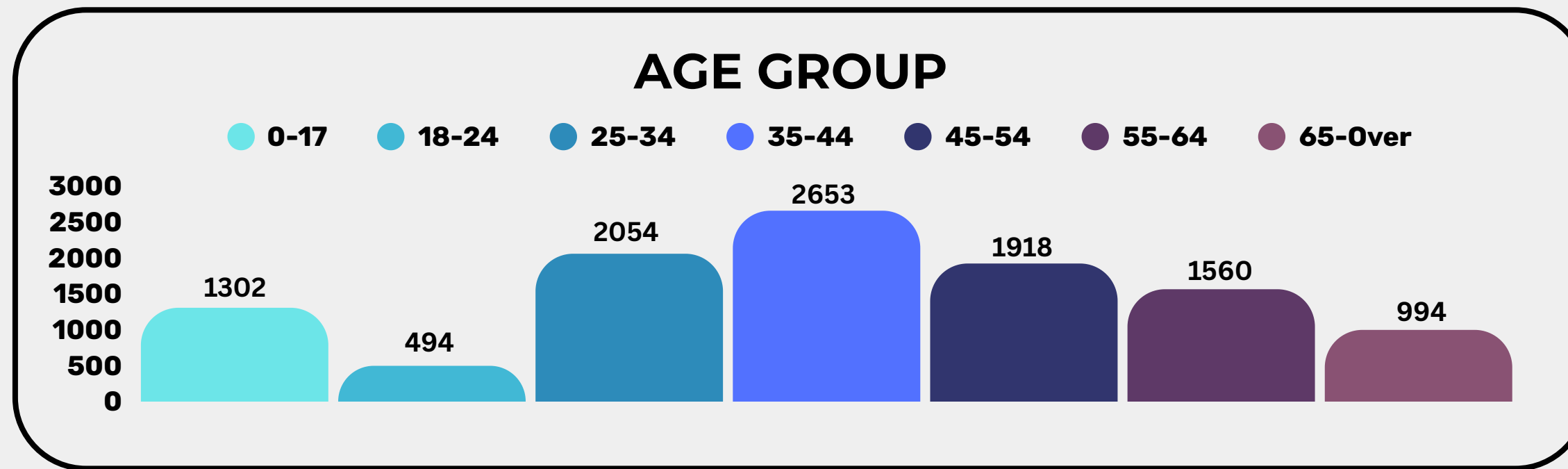
**10,876**  
TRAVELERS  
ARRIVING BY AIR



**99**  
TRAVELERS  
ARRIVING BY SEA








**10,521**  
VISITORS

**454**  
RESIDENTS



- Sea Vessels**
- LIVE ABOARD
- FISHING VESSEL
- RESEARCH VESSEL
- YACHT

## MOST TRAVELERS BY COUNTRY

COUNTRY	FEB.2026	YTD
CHINA 	3,979	6,278
TAIWAN 	1,669	3,041
JAPAN 	1,257	2,558
U.S.A. 	781	1,997
PHILIPPINES 	434	925
AUSTRALIA 	405	976
GUAM 	240	518

## TOP 7 VACCINATED COUNTRIES

COUNTRY	VACCINATED	TOTAL	%
AUSTRALIA	394	405	97%
GUAM	226	240	94%
U.S.A.	729	781	93%
TAIWAN	1514	1669	91%
PHILIPPINES	357	434	82%
JAPAN	1026	1257	82%
CHINA	2901	3979	73%

### Air Vessels

CAMBODIA AIRWAYS (KR5561)	NAURU AIRLINES (ON045)
CHINA AIRLINES (CI028)	PRIVATE
CHINA AIRLINES (CI030)	QANTAS AIRWAYS (QF165)
GREATER BAY AIRLINES (HB8235)	UNITED AIRLINES (UA143)
HONGKONG AIRLINES (HX2725)	UNITED AIRLINES (UA157)
MILITARY (MILAIR)	UNITED AIRLINES (UA192)
NAURU AIRLINES (ON041)	UNITED AIRLINES (UA193)
NAURU AIRLINES (ON942)	
NAURU AIRLINES (ON031)	