

P.E.F. PUBLIC MONTHLY DASHBOARD - JUNE 2025



8,283
JUNE, 2025
TRAVELERS



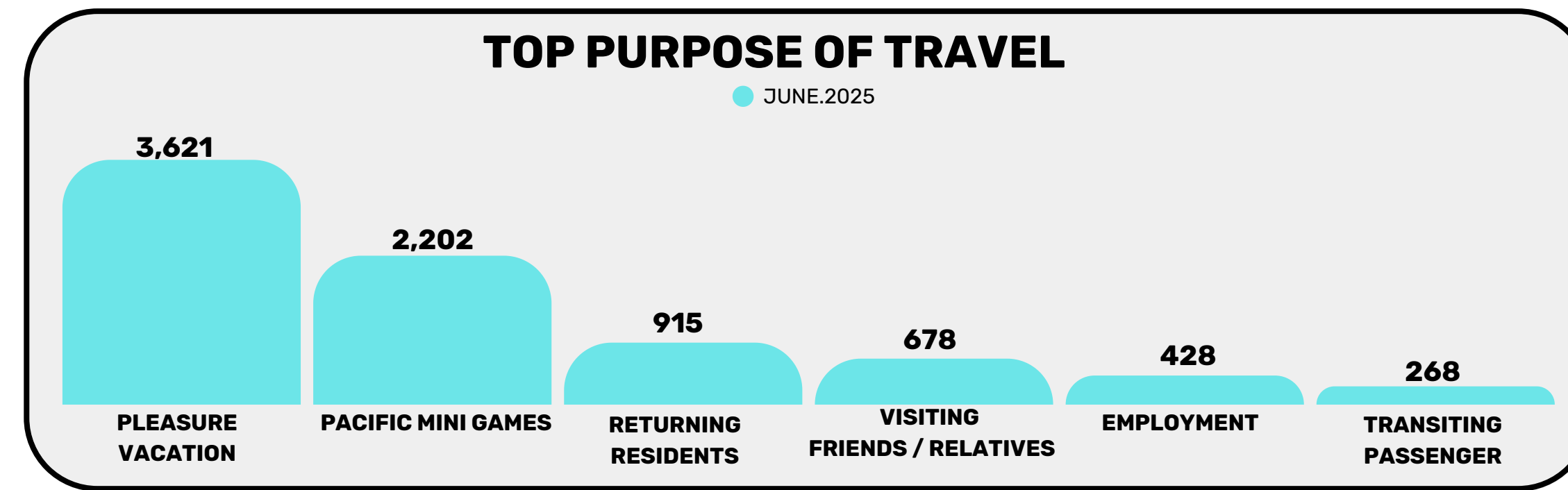
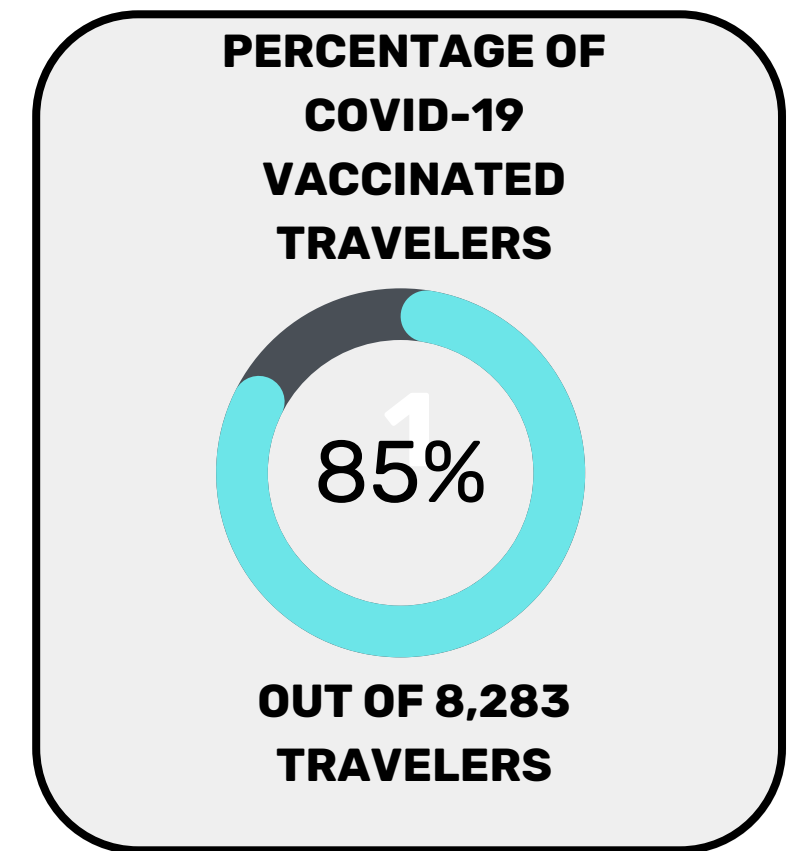
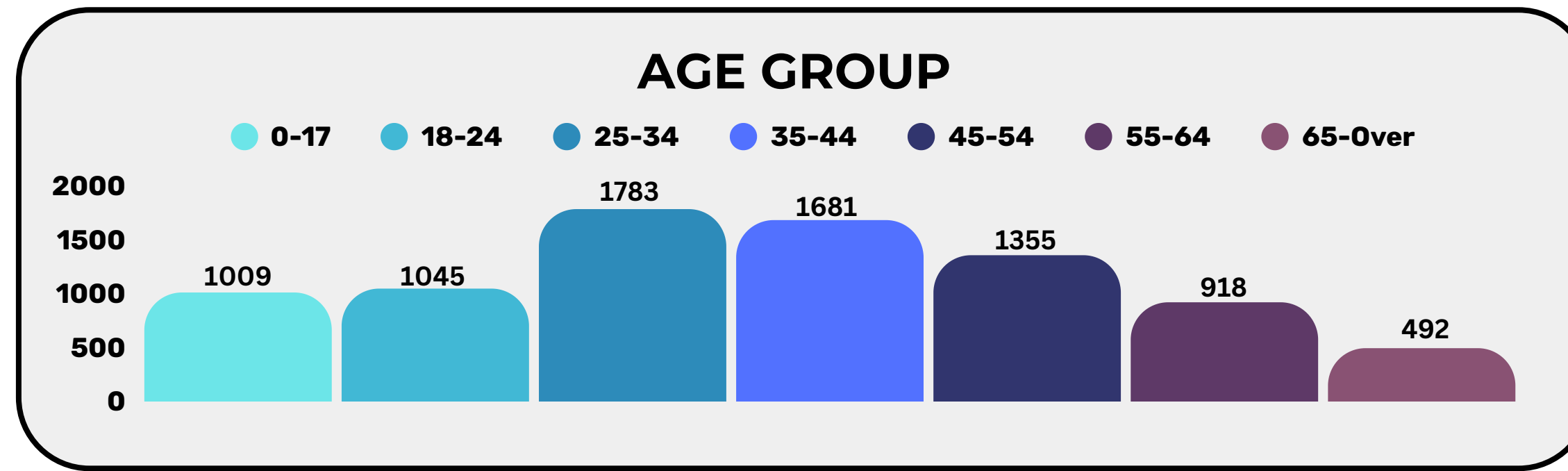
8,281
TRAVELERS
ARRIVING BY AIR



2
TRAVELERS
ARRIVING BY SEA


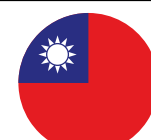





7,368
VISITORS

915
RESIDENTS



Sea Vessels
YACHT

MOST TRAVELERS BY COUNTRY

COUNTRY	JUNE.2025	YTD
CHINA 	1,207	9,454
TAIWAN 	1,501	8,013
U.S.A. 	830	4,940
JAPAN 	280	3,414
PHILIPPINES 	310	1,926
AUSTRALIA 	362	1,774
GUAM 	446	1,514

TOP 7 VACCINATED COUNTRIES

COUNTRY	VACCINATED	TOTAL	%
AUSTRALIA	341	362	94%
TAIWAN	1348	1501	90%
GUAM	402	446	90%
FIJI	191	213	90%
U.S.A.	736	830	89%
PHILIPPINES	268	310	86%
JAPAN	232	280	83%

Air Vessels	
AIR NIUGINI (PX9050)	NAURU AIRLINES (ON712)
AIR NIUGINI (PX9052)	PRIVATE
CAMBODIA AIRWAYS (KR5561)	QANTAS AIRWAYS (QF165)
CHINA AIRLINES (CI028)	QANTAS AIRWAYS (QF199)
CHINA AIRLINES (CI030)	SOLOMON AIRLINES
FIJI AIRWAYS	UNITED AIRLINES (UA157)
HONGKONG AIRLINES (HX2731)	UNITED AIRLINES (UA192)
MILITARY (MILAIR)	UNITED AIRLINES (UA193)
NAURU AIRLINES (ON031)	
NAURU AIRLINES (ON041)	